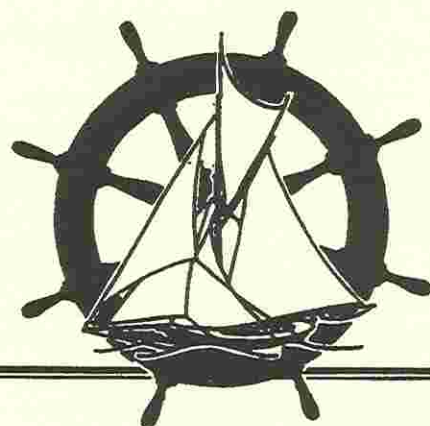


# THE HELM

Spring, 2003 - Volume 21, No. 1



## A PUBLICATION OF THE CLASSIC YACHT RESTORATION GUILD, INC.

*Elf, past and future*



### President's Message

Spring at Last!

... by Rick Carrion

**W**hat a winter we just experienced! After the big storm, I had to remove the glass from the storm door to start shoveling from inside. Every door had four to six feet of snow packed tight against it. In short, I am glad it is over and the various items of damage finally cleaned up. Now we are finally getting a spring, though somewhat wet and cold. But I guess it beats going from winter almost directly to summer, as we have done so often in recent years. And finally the drought of '02 is history. I really look forward to a relaxed day soon to be sailing.

Since the fall issue of *The Helm*, Graham has worked on completing several commitments, other than *Elf*. I met with Graham today and we are set to start up again in mid-June, as soon as school is out for me. We have found that the efficiency factor increases almost exponentially when we work together. Also during the summer, members tend to drop by more frequently to lend a hand on whatever project needs attention. I not only look forward to my last day of teaching, June 16th, but also being able to work with Graham and members at a full speed ahead pace. And my "Countdown to Retirement" clock shows a mere 389 days until my very last day at Elkton High, June 15, 2004. As stated earlier, I plan to have my retirement party at the Granary docks and sail west down the Sassafras into the sunset. One additional thought I need to add is that I plan to continue to be a good steward and use *Elf* in a variety of ways to promote her historical significance. First and foremost, to take members sailing to let every one appreciate directly what they supported and worked so hard to make a reality. It is also important to have *Elf* be self-supporting, which may be done utilizing any number of types of cruises. Last night I turned in a

final report to complete certification coursework. I plan to maintain and use my Maryland teaching certificate to teach aboard *Elf* and impart a better understanding of East Coast Aquatic Ecosystems to a new generation of students. My goal is to actively engage *Elf* in the living history of the Chesapeake Bay, while improving individual attitudes and ethics. Though lofty, I think it is very do-able!

So you may surmise that even though Graham has been off on other projects since mid-December, much has been done for the good of the cause. Just getting through and cleaned up after the winter was a chore. Now it is time to focus on finishing this restoration and get *Elf* wet again.

To update everyone, the hull is caulked and ready to glaze and paint, and then Graham and I will begin the completion of the interior. We need to install the diesel, build the galley, icebox and navigation station, and then start decking by late summer. With any luck, we should have the deck laid and caulked by Christmas. Then we will move on to the rigging, mast, booms and bowsprit. Through each step, we can use your help and support. So plan to stop by and check our progress and/or help and learn. Every effort is greatly appreciated, because it is going to take a group effort to launch in the next 389 days, in time for the retirement party!

And yes, I am enclosing directions for those driving. The GPS waypoints for landing in the yard are 39 degrees 29.20' North, 75 degrees 57.75' West. The mode of transportation is up to you, but plan on a visit soon.

*"Lawley Built"*



## Graham's Letter

### Time Marches On . . .

**W**e are all confronted by the March of Time. This week, I was wooding a large pine boom, badly deteriorated by the ravages of sun, wind and rain. I just built this thing! The word "just" has been a relative term in my life, along with "brand new." There shouldn't be anything wrong with that -- it's practically "brand new." Like our other ten, no thirteen-year-old refrigerator. Why is the mower burning oil? It's practically "brand new."

So what's my point? Well, unlike the refrigerator and the mower, the boom wasn't that old. Let me think -- we stepped the mast in Galesville in 1999. So what happened? Nothing happened. This wonderful seventy seven-year-old boat, beautifully and extensively restored, sits in the slip idle. The owner loves this boat, but like so many folks today he is consumed by demands of work and family. Although the bulk of the restoration has been done for several years, the remaining ten percent is still incomplete. Endless details like instrument gauges, wiring, plumbing and so on. Remember that the devil is in the details.

So while he struggles with these remaining projects, the boat is beginning to deteriorate before his eyes. What's the solution? To hell with radar, slip the lines and take her out. Idleness will kill a wooden boat faster than the hardest and most demanding work. Wetted decks and topsides don't leak, rigging stays tight, worked lines stay supple and the relationship between boat and crew keeps everything shipshape and in working order.

And to it will have to be for Elf once she's done. Launch her and put her to work. I would rather deal with honest wear and tear than deterioration in a boat that sits idle, any day. Once restoration is complete, it's not over for the Guild by any means. In many ways the work has just begun and there will be work to do for anyone who wants it. Just sailing Elf is going to be hard work, not to mention rewarding and very exciting.



Elf's Shipwright

 **Interlux**  
PROTECTION YOU CAN TRUST

## Guild Vision

**T**he Classic Yacht Restoration Guild is a non-profit membership organization dedicated to the preservation of traditional watercraft, both power and sail. Yacht restorations are accomplished through a combination of member donated skills and resources. A cooperative educational setting is provided by the Guild for all members who wish to acquire or sharpen boat maintenance and restoration skills. Our membership is diverse. Each member can participate either as an instructor, a student of restoration techniques, a participant in Guild sailing events and cruises or as a supporter through dues and donations. The Guild also offers a variety of resources and skilled professionals who are qualified and interested in helping you connect with the right people to assist with your project.

Work on our flagship *Elf* currently involves restoration of the original rig, deck, and cabin configurations. In addition, the Guild has received donations of many small craft which are used as demonstration and education projects. Ships carpentry, rigging, mechanics, and fine wood finishing are all topics covered by periodic workshops held while restoration projects are underway.

Once a Guild vessel is made seaworthy, the true pleasure of operating historic or significant small craft begins. Members are encouraged to sail Guild vessels with emphasis on instruction of boating safety, piloting, navigation, and the maritime history of the Chesapeake Bay. The Guild plans several cruises to maritime and waterfront festivals every season. Members serve as crew and staff displays at these events.

As a non-profit organization, the Guild always welcomes tax-deductible contributions. For example, the Guild received a 1963 vintage Lightning class racing sailboat and a large library of titles on boat building, maintenance, and maritime history. Also, donation of items used for restoration or fund raising are also tax deductible.

With a growing membership, the Classic Yacht Restoration Guild looks forward to increasing activity and good times. Please ask a member for further information and details.

*Elf* 1888  
Sailing at  
Marblehead



Stebbins, *ELF* photo courtesy of:  
Hart Nautical Collections, MIT Museum



# A FULL DECK

or, "Thanks for the Planks"

... by Cynthia McNicholas

**C**YRG was the grateful recipient this month of a large load of angelique wood planks, for use in creating decks for Elf, courtesy of the Philadelphia Ship Preservation Guild and, in particular, Naomi Kaminski.

The Philadelphia Ship Preservation Guild, like CYRG, is a non-profit organization dedicated to the rescue, maintenance and promotion of venerable old ships and the teaching of maritime skills to school and community groups and the general public. Currently, the PSPG owns and operates the 100 year old barkentine, *Gazela*, and also operates the historic tugboat, *Jupiter*.

*Gazela*, a 177 foot square rigger carrying 11,000 square feet of sail, has for many years been the good will ambassador for the international seaport of Philadelphia. She is currently undergoing renovations, including complete replacement of the decks and waterways and the fitting of plumbing and electrical systems. With the aid of two professional shipwrights and roughly 100 volunteers, and with an enormous amount of work and a bit of luck, the *Gazela* renovation project should be completed in time for her annual trip to Norfolk, Virginia in early June.

One of those volunteers who is devoted to maintaining *Gazela* as the unique resource that she is, is Naomi Kaminski, long time friend of Rick Carrion. Sharing a love of historic boats, each has assisted the other with their respective preservation efforts, at various times over the years as the opportunity arose. When Naomi realized that the supply of angelique donated for replanking decks on *Gazela* would exceed their need, she arranged for the donation of the excess to CYRG, if in fact the available wood was appropriate and usable, and if CYRG could arrange for its transport from Penn's Landing in Philadelphia to Earleville, Maryland. Upon inspection, Rick determined that the wood was usable and that it would probably be sufficient for the construction of *Elf*'s decks, or close to it. He eagerly accepted the donation. He then enlisted the aid of friend and neighbor, Dave Farrow, owner of Holly Hill Nursery, who lent the use of one of the nursery's tractor trailers during a run to the Philadelphia area. And so, on Tuesday, May 14th, the precious cargo of angelique made its way south on I-95 to Rick's farm, to await transformation by Rick and Graham this summer into decks for *Elf*.

What a stroke of luck! ..... Or was it fate that brought this supply of wood to *Elf*? In the process of inspecting and obtaining the angelique, Rick calculated the number of board feet that the raw planks would produce. The result was one thousand eight hundred and eighty-eight board feet of wood ..... that's right, 1888 feet. It seems as though this wood was simply meant for our esteemed flagship, 1888 Yacht *Elf*.

Sincere thanks are due to Naomi Kaminski, to Dave Farrow, and especially to the kind person who graciously agreed to redirect a portion of her PSPG donation, thus allowing our project to take a major step forward.

To learn more about *Gazela* or *Jupiter* or the Philadelphia Ship Preservation Guild, you can view their website at [www.gazela.org](http://www.gazela.org), or call 215-218-0110.



Stebbins, *ELF* photo courtesy of:  
Hart Nautical Collections, MIT Museum



Deck restoration will be guided by details shown in this photograph taken aboard *Elf* in 1890. Shown is Henry Howard, her second owner.



# Crab Feast, Barbecue, Silent Auction 2003

We want to thank everyone for making last year's Crab Feast & Silent Auction a tremendous success. As you can see from the photos, every had a wonderful time along the water enjoying some of the Bay's bounty while helping raise money for the Elf restoration. We are looking forward to another wonderful event to be held in September.

We need your help to organize this year's event including gathering items for our Silent Auction. All donors will receive a personal thank you letter and recognition in our Fall Newsletter. We need items for the Silent Auction. Last year's raised over \$3,000 and we want to exceed that amount this year.

We are in the process of creating a new brochure and information package that might be useful as you travel this summer. When you meet someone who might have something to donate, you could provide information about our project by sharing our printed materials. Donors will receive a one-year membership in the Guild. We look forward to working with you to make this year an even bigger success.

Call Rick at 410-275-2819 or email at: [elf1888@earthlink.net](mailto:elf1888@earthlink.net).

**Thank you.**



**Looking forward to seeing you  
and your guests.**

**Remember, children are admitted free.**



**WINDOW ON THE CHESAPEAKE**  
By WENDY MITMAN CLARK

Recently Vida Van Lennep and friends visited ELF to see our progress and provide more memories from when she was sailing on Elf. Throughout the conversation, Vida told me that ELF was nicely covered in the book, *Windows On The Chesapeake*.

Wendy Mitman Clark has a chapter all about Gus and Vida and their arrival to the Chesapeake Bay on ELF. They settled in the St. Michaels, Maryland area and were later the original organizers and co-founders of the Chesapeake Bay Maritime Museum in St. Michaels. The book is a refreshing look at several points of interest and people on the Bay waterfront. I hope to be able to do a reprint of the chapter on Gus and Vida in the next HELM. In the meantime you should pick up a copy. You will love it!

**LETTERS TO THE EDITOR**

We would like to hear from members for a potential letters column. Scuttlebutt is also invited. You could perhaps post interesting upcoming events. Please E-mail to me: [elf1888@earthlink.net](mailto:elf1888@earthlink.net) and CC to [ray.zeigler@verizon.net](mailto:ray.zeigler@verizon.net).

Be sure to put CYRG HELM in the subject window.

**WORKSHOPS**

We have many different projects that may be of interest to you. They provide active, hands-on learning opportunities and give the satisfaction of helping with the ELF restoration. Just to name a few of our current projects: glazing, painting, general wood-working, varnishing, and, yes the seemingly endless SANDING.

Please call ahead to announce your arrival: 410-275-2819

**BOOK ON ELF IN THE WORKS**

We have a member that is starting to organize a rough draft of a book about ELF. It will include the history, the people who have owned and worked on her, and the restoration project. Now is the time to think back to some memorable moment you recall aboard ELF. Who knows? You may be published. So please send them to me soon and we may also publish them in the HELM.

*"Lawley Built"*

**SHARE THE HELM WITH FRIENDS**

We would be glad to send you future issues of our newsletter HELM electronically in pdf files. It would save us time and money and then you could post or forward it easily to friends. Please make a special request on the membership form and be sure to specify the E-mail address you want it sent to.

## Encouragement

Please consider writing an article for our news interest features. When you see your article published I will give you a gift of an official *Elf* T-shirt or *Elf* mouse Pad. We may, at times, need to edit your contribution for space considerations. Thank you!

**Topics to consider:**

- Historical or unique moments on *Elf*
- Tools or gear and their uses on traditional boats
- How-to articles
- Kid's Corner
- Special Environmental moments that you enjoyed
- You and your boat adventures
- Other... your choice

 **Interlux**  
PROTECTION YOU CAN TRUST

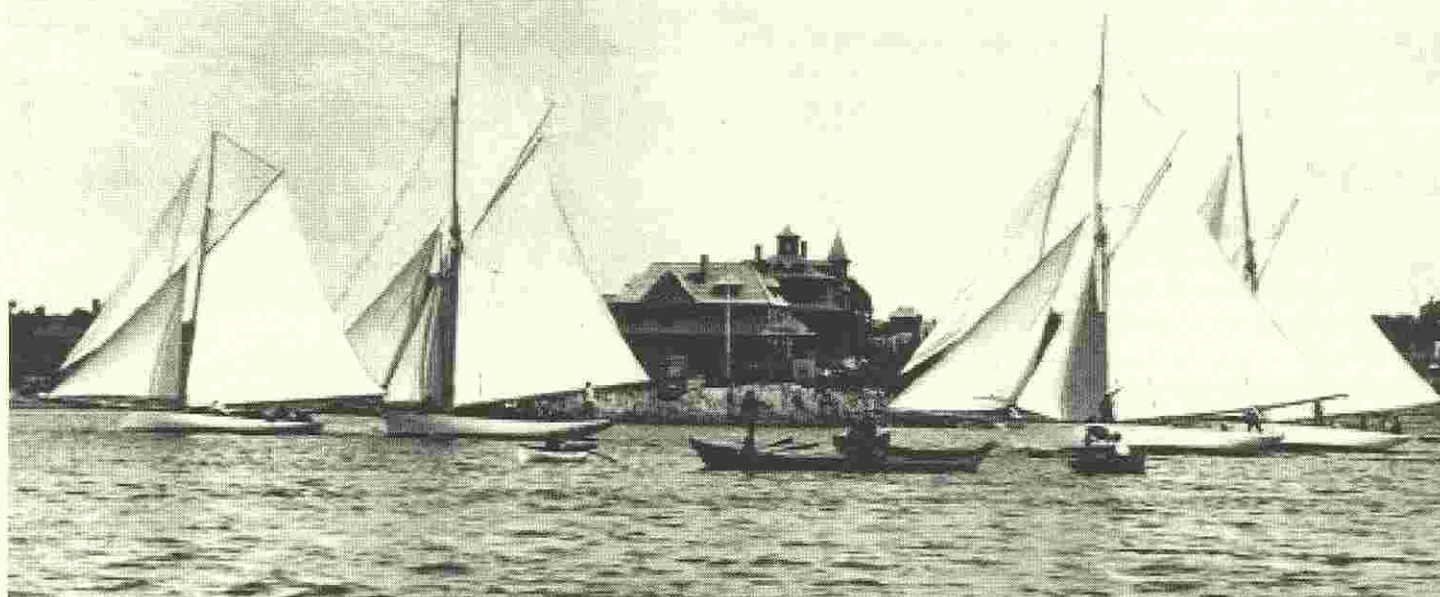
**THANK YOU INTERLUX**

Donations are ALWAYS appreciated. We recently received a shipment of paints and varnishes from INTERLUX. They are being used to add a wonderfully refreshing new look to ELF's interior. We look forward to continued support this Spring and Summer as we glaze and paint the topsides. We invite you to inspect the quality of workmanship performed using the INTERLUX products.

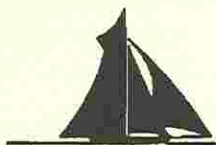


Stebbins, *ELF* photo courtesy of:  
Hart Nautical Collections, MIT Museum

Stebbins, *ELF* at Marblehead photo courtesy of:  
Hart Nautical Collections, MIT Museum



## THE HELM



---

The Classic Yacht Restoration Guild, Inc.  
P.O. Box 237  
683 Pond Neck Road  
Earleville, MD 21919-0237