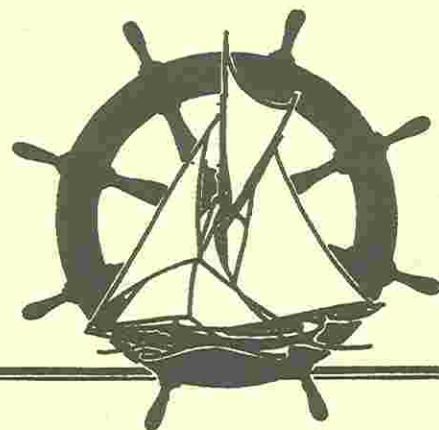


THE HELM

Summer, 1999

A PUBLICATION OF THE CLASSIC YACHT RESTORATION GUILD, INC.



President's Message

... by Rick Carrion



Recently I found myself in the Elf workshop reorganizing every facet, tools, wood, gear, rigging, and who knows what else. Moving forward on Elf's restoration motivates me. Our shipwright, Graham Ero, has finished previous commitments and is able to dedicate large blocks of time to the Elf project. Graham and I are working with a schedule which will assure productivity and efficiency. My experience as a teacher has made me more aware of both. As fall approaches, Graham will be able to work on weekends. This will help facilitate workshops to provide learning experiences for members and allow him to share his skills with others who want to become involved with the restoration of Elf. As membership involvement increases, the restoration process will come closer to reality.

With work progressing, I have set a goal to have Elf launched by Spring of 2000. Although it is admittedly a lofty goal, I think it is attainable. Needled to say, there is still a lot of work to be done and funds to be raised. It is hoped that we will be able to save a large percent of the planking above the waterline. The main effort will concentrate on completing the planking, decking, hatches, and rigging with new sails. The interior detailing will be completed after the launch.

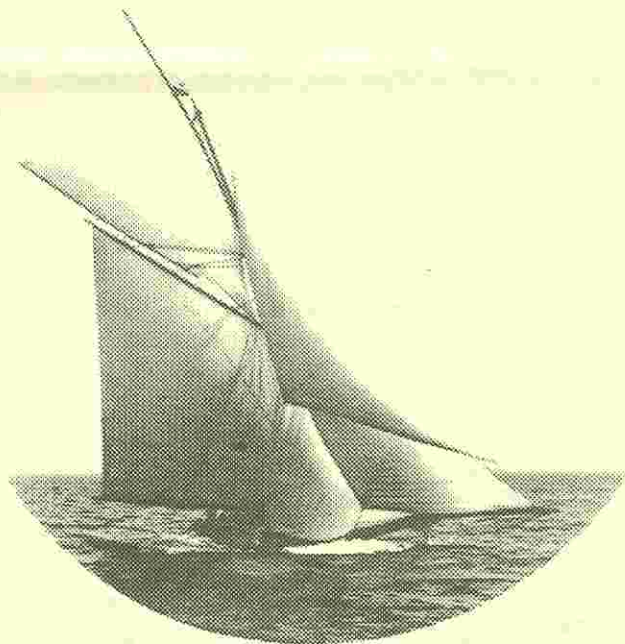
Along with the launch goal, we need to increase the paid membership. I ask for your help in achieving a goal to double our membership. Along with this newsletter, there is a brochure that I ask you to share with a friend or associate to encourage new participation.

Another effort that we are undertaking is seeking corporate sponsorship for materials and/or funding. If materials like paints,

sails, or hardware are donated, we can save funds and redirect those funds toward paid labor.

In closing I want to thank you for your continued support in helping to broaden our membership.

A reminder: All donations are fully tax deductible.



ELF

The "Elf" was designed and built by Lawley in 1888 for Mr. William H. Wilkinson of Boston. She is a keel boat, and her dimensions are as follows: Length overall, 35.8 feet; length, 1. w. l., 28.1 feet; beam, 11 feet; draught, 6.5 feet. The "Elf" made a creditable racing record in 1888 and 1889, and went to New York at the same time with the: "Saracen" in 1889. She has a reputation as a good hard-weather boat and sail-carrier.

Shipwright's Letter

... by *Graham Ero*

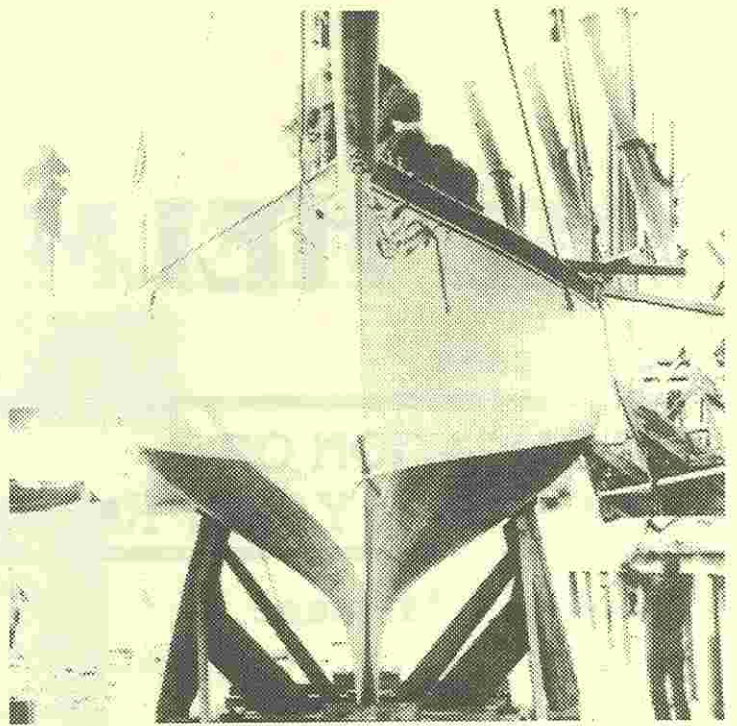
Work is underway again on Elf and it feels good to be back on the project. What was interesting for me was to have a fresh look at what we had done so far. Everything from the galvanized steel floors and keel bolts to the twenty pairs of locust frames, stern post, and new pine planking look substantial and sound. This is in stark contrast to the tired old boat we started with. I am sure this renewed boat will be as strong as she ever was. I am excited about completing this project.

We reviewed information and old photographs that showed bulwarks, the transom, and the bow sprint rigging. We were reminded of what a fine and beautiful Lawley Elf is. I have a mental picture of the finished boat in detail almost as if it were finished already. Much of this detail is the result of a wonderful afternoon spent with Vida and Gus Van Lennep. Gus discussed the companionway slide detail, house joinery, and corner posts, that extend down through the decks to the hull frames. This was a surprise, but when you consider the open expanse of decks and the need for support in front of the cockpit, it made sense. We also discussed deck layout and I came away with a better sense of the boat's general look and presence.

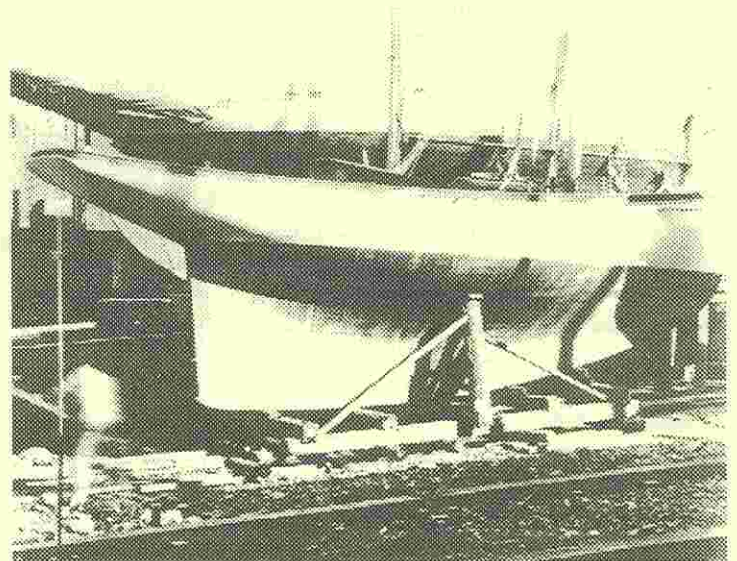
The next push is going to get us to the point where she could float again. That is a big deal. With the hull and decks complete, we have a sound boat again to be outfitted and rigged. No small undertaking, but this kind of momentum is hard to stop.

I want to say that with all the work that I have put into this wonderful boat to date, I have developed a personal relationship with and commitment to completing this project.

I look forward to the day we can once again put Elf under sail. I think this day is in sight for all the members who have shared this vision and remained devoted to that end. I look forward to seeing the genius of George Lawley endure into the next century.



Elf - 1888
Bow View Before Launch



Elf - 1888
Starboard View Before Launch

CORPORATE SPONSORSHIP

We are in the process of putting together materials to be able to effectively present a plan to potential donors of materials or funding. We welcome any help and ideas you may consider sharing. You may currently be working for a company that makes or markets products we need for ELF (such as paints, finishes, sails or sail cloth, hardware, marine insurance, or services). If so, please let us have your thoughts of ways to best approach donors of resources.

We plan to attend the Annapolis Sailboat Show in October to expand our list of contacts and distribute information about our needs and the GUILD'S goals and objectives. Rick will personally follow up on any ideas you may have.

RESEARCH

Over the past 28 years Rick has done an extensive amount of research on ELF, her designer GEORGE F. LAWLEY, and builder LAWLEY MANUFACTURING. He found the research process challenging and very interesting. Museums are always acquiring materials and reorganizing old files and collections. If you would like to contribute your skills researching aspects or features of ELF'S past while visiting a museum, please let Rick know. He will gladly provide you with an updated research packet and help direct you to different museums and contact people with LAWLEY collections. We still have specific restoration design needs.

FUND RAISING

As a teacher, Rick has experienced many fund raising ideas and projects. Rick found a company that pays for computer printer ink cartridges and reprocesses them. If you or your company can help with this environmentally friendly fund raiser we can send you boxes, postage, and all the details. Also, please share your fund raising thoughts and ideas with us.

MEMBERSHIP

You may be a long standing founding member for the past 15 years. You may only have a casual interest. You may be or know someone who is proud to contribute to the ELF restoration. Whichever category, your support is greatly appreciated. All participation is highly valued.

Enclosed is a recent brochure that I hope you will share with a friend, encouraging them to join the effort. Remember all donations are TAX DEDUCTIBLE.

BOARD OF DIRECTORS

If you would like to be considered for a board of directors position for the year 2000 activities, please respond in writing by October 1, 1999. Express your areas of interest in a brief statement.

ELF UP DATE

During the past several weeks we have progressed very well with fitting new planks, futtocks, and floor timbers. We hope to be above the water line soon. Plans are to save as much of the original planking above the water line as is reasonably possible. If all goes well, we should be renewing the deck beams and decking in early fall. Graham will be presenting workshops on Saturdays for you to learn techniques and/or to participate in the restoration. We could use your help with a variety of hands-on projects at the Saturday workshops. We encourage your help to make the restoration a success. Call Rick (evenings) 410-275-2819 to schedule a time to join in the efforts.

CLASSIC BOAT MAGAZINE

Classic Boat Magazine would like to do a feature article on ELF and the restoration or use an original article. You could be published! Let us know if you would like to work on this and we will give you the necessary background material.

MEMORIAL DONATIONS

We want to thank everyone to date for your generous memorial donations made in memory of a loved one. If you would like to make a specific memorial donation, please contact Rick for details.

LESSON LEARNED

While attending an environmental course in Baltimore, Rick had his vehicle broken into. Photos of ELF and newsletter materials were stolen (thus, the delay of this newsletter). A *Mariner* article making a plea for the return of the photos is enclosed. We are in the process of re-purchasing the available museum copies. We hope the previous owner's photos showing deck details will be returned. They cannot be replaced.

YOU MIGHT BE A SAILING BUM IF:

- any of your wedding gifts came from West Marine...
- you think rum is the official state drink..
- your best shoes are Topsiders...
- your car's hood ornament is the top off of a sailing trophy...
- your idol is Jimmy Buffett...
- your halyards are brand new, but your belt has two splices...
- you read "Latitude 38" under the covers with a flashlight...
- your underwear has a North Sails logo...
- you have at least one broken boat part in your car at all times...
- you have a Jello mold in the shape of a J/22...
- your vacation plans center around championship regattas...
- you have to dress up to go to Wal-Mart.
- you think of duct tape as a long term investment...
- people are afraid to touch your foul weather gear...
- you think matching wet weather boots are an acceptable wedding gift.
- the local boat yard's phone number is number one on your speed dialer.

Yes, you just might be!

Classic Yacht Restoration Guild, Inc.
PO Box 237
Earleville, MD 21919-0237
(410) 275-2819



All donations are
appreciated and tax deductible.

Name _____
Address _____
City _____ State _____ Zip _____
Phone and email _____

Enclosed please find my check, payable to the Classic Yacht Restoration Guild, for:

please print Basic Membership (\$20) Sponsor (\$100)
 Contributor (\$50) Donor (\$500) Other _____

I would like to participate in restoration workshops.

Special skills or interests: _____

I would like to participate in crew training for ELF 2000.

Special skills or interests: _____

**Please Consider Membership Renewal
or a
Donation
to
Assure Continued Progress**

THE HELM



THE CLASSIC YACHT RESTORATION GUILD, INC.
683 Pond Neck Road
Earleville, Maryland 21919